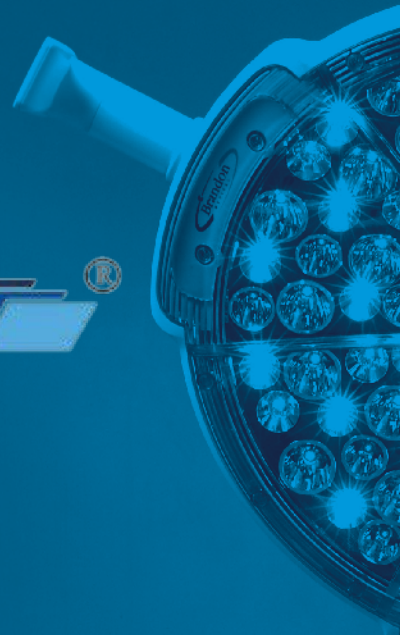




CARE SURGICAL

alpinemedica  [®]

alpinemedica es: Jesús Del Pino Farfán P.F. J731124UM5
Oficina: Jaime Gómez No. 2802 Int. 2 Col. Paseo Del Sol
Zapopan, Jalisco, México. C.P. 45079
Tels: (+52) 33-15-78-38-62 / 33-15-68-15-02
www.alpinemedica.com.mx



2021 PRODUCT CATALOG



CARE SURGICAL

Specialists in Patient Positioning.

Care Surgical is a global company focused on providing safe and comfortable patient positioning products for a variety of surgical procedures. Offering a comprehensive range of disposable and reusable pads, covers and cushions, our products are compatible with most spine and standard operating table systems on the market.

We pride ourselves on being responsive to our customers' needs and welcome new concepts to complement our product range. Our world class customer service and robust quality management systems have earned us ISO 13485 certification.

Our commitment to excellence is why so many customers choose Care Surgical for their patient positioning needs.



Contents

4	CS Prone & Prone Plus Head Support Systems	16	CS Comfort Cushions
6	CS Disposable Foam Supports	18	CS Bow and Wilson Covers
8	CS Contour Head Support	19	CS Disposable Standard Covers
9	CS Head Tray Attachment	20	CS Standard Covers, Comfort Covers & Cushions Kits
10	CS Spine Frame	21	CS Prone Face Blocks
12	Armboard	22	Index
13	CS Reusable Supports		
14	CS Prone Patient Supports		
15	CS Disposable Comfort Covers		

alpinemedica 

alpinemedica es: Jesús Del Pino Favila PIFJ731124UW5
Oficinas: Jaime Gómez No. 2802 Int. 2 Col. Paseos Del Sol
Zapopan; Jalisco; México. C.P. 45079
Tels: (+52) 33-15-78-28-02 / 33-15-68-16-02
www.alpinemedica.com.mx

All Care Surgical products are latex free.



CS Prone Plus Head Support System & Face Cushions

- + Distributes the pressure evenly across patient's forehead and cheekbones
- + Use the face cushion with the CS Prone Plus Head Support System to achieve a neutral neckline and to assist with patient monitoring
- + Cushions are compatible with the ProneView® and most other standard helmets and cradles



CS Prone Head Support System & Face Cushion

- + Open chin design allows for rotation of the patient without removing the intubation tubing
- + This unique design removes pressure from the chin without compromising support to the face
- + Use the face cushion with the CS Prone Head Support System to achieve a neutral neckline and to assist with patient monitoring



CS Prone Plus Face Cushion

Order Code: CSM-2512
Qty: 10 Units



CS Prone Small Face Cushion

Order Code: CSM-2514
Qty: 10 Units



CS Prone Plus Head Support System

Order Code: CSM-2565
Qty: 1 System (Helmet and Mirror)



CS Prone Face Cushion

Order Code: CSM-2510
Qty: 10 Units



CS Prone Head Support System

Order Code: CSM-2560
Qty: 1 System (Helmet and Mirror)

CS disposable stand-alone head supports



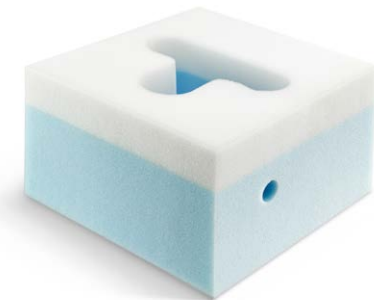
CS ProneOne Head Support

Order Code: CSM-2520
Qty: 6 units



CS Prone Face Mask

Order Code: CSM-2530
Qty: 5 Units



CS Prone Face Block 7''

Right Intubation Slot
(compression packed)
Order Code: CSM-2535V
Qty: 10 Units



CS Prone Face Block 5''

Right Intubation Slot
(compression packed)
Order Code: CSM-2550V
Qty: 14 Units



CS Disposable Lateral Head Support (Adult)

Order Code: CSM-2410
Qty: 20 Units



CS Disposable Supine Head Support (Adult)

Order Code: CSM-2411
Qty: 20 Units

Disposable supports from head to toe



CS Arm Cushions (Pair)

Order Code: CSM-2575
Qty: 10 Pairs



CS Prone Chest and Pelvic Rolls

Order Code: CSM-2902
Qty: 2 Sets



CS Adjustable Prone Leg Cushion

Order Code: CSM-2590
Qty: 2 Sets



CS Egg Box Foam 80'' x 20''

Order Code: CSM-2585
Qty: 1 Unit
12'' section perforations
Different Sizes available on request

The CS Contour connects directly to the Allen® C-Flex® Head Positioning System



CS Contour Head Support Cradle

Order Code: CSM-2569
Qty: 1 Unit



CS Prone Plus Face Cushion

Order Code: CSM-2512
Qty: 10 Units

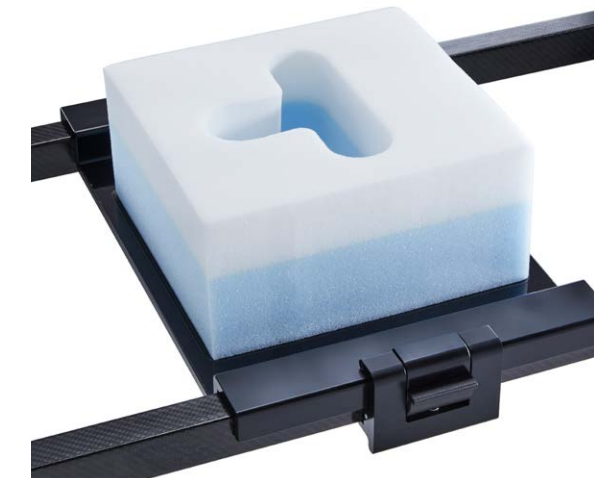
CS Head Tray Attachment

- + Fits Jackson style spine rail tops
- + Use with CS Prone Head Supports



CS Head Tray Attachment

Order Code: CSM-2714
Qty: 1 Unit



CS Spine Frame, fits all standard operating tables



550 lbs. (250kg) patient weight capacity



Crescent shaped chest support reduces the chance of Brachial Plexus injury and enables easier positioning of the breasts.



The design of the supports allows the abdomen to hang freely to reduce venal pressure.



CS Spine Frame Set

Order Code: CSM-2715
Qty: 1 Unit



CS Chest Support

CSM-2709
Qty: 1 Unit



CS Hip Supports (Pair)

CSM-2717
Qty: 1 Pair

Included Accessories



CS Spine Frame

CSM-2712
Qty: 1 Unit

CS Spine Frame Straps (set of 4)

CSM-2712-4
Qty: 1 Unit



CS Comfort Covers Set - 3 Piece

Order Code: CSM-2601
Qty: 6 Sets (1 set included)

Optional Accessories



CS Hip Supports - Large (Pair)

Order Code: CSM-2719
Qty: 1 Pair



Fisso Armboard

Order Code: 6646.01
Qty: 1 Unit

*Compatible with rail sizes that measure 1.25" (3.2cm) wide and 1.5" (3.8 cm) tall with 14.5" (36.8 cm) space between.

Multi-axis armboard for uncompromised positioning of the patient's arms

Features

- + One step set-up
- + Central clamping mechanism for easy, fast and secure positioning of the arm support
- + Rapid locking base allows connection to the side rails of the table
- + Uncompromising, efficient handling and safe holding
- + Space saving on the operating table, compact design
- + Anatomically shaped visco-elastic (VE)-pad



Fisso Armboard

Order Code: 6646.01
Qty: 1 Unit

CS Reusable Supports

- + Evenly distribute weight to reduce pressure-related and neurological injuries
- + Soft & durable
- + Easy to clean



CS Supine Head Support (Adult)

Order Code: CSM-2805
Qty: 1 Per box



CS Lateral Head Support (Adult)

Order Code: CSM-2812
Qty: 1 Per box



CS Heel Supports (Pair)

Order Code: CSM-2807
Qty: 1 Pair



CS Shin Supports (Pair)

Order Code: CSM-2820
Qty: 1 Pair



CS Knee Rings (Pair)

Order Code: CSM-2821
Qty: 1 Pair



CS Prone Patient Supports

Code: CSM-2716
Qty: 1 - (5 Piece Set)

The CS Prone Patient Supports are made from multiple layers of pressure-relieving foam

- + Velcro-free chest support
- + Quick-release locking mechanism
- + Compatible with all Jackson style spine rail tops



Velcro-free Chest Support improves infection control.



Quick-release supports lock securely to the table.



CS Chest Support

Code: CSM-2709
Qty: 1 Unit



CS Thigh Supports (Pair)

Code: CSM-2718
Qty: 1 Pair



CS Hip Supports (Pair)

Code: CSM-2717
Qty: 1 Pair



CS Hip Supports - Large (Pair)

Code: CSM-2719
Qty: 1 Pair



CS Comfort Covers - 5 Piece

Order Code: CSM-2600
Qty: 6 Sets

CS Comfort Covers, protect the patient from skin shear

- + Absorb moisture
- + Single-use to aid infection control



CS Comfort Covers Set - 3 Piece

Order Code: CSM-2601
Qty: 6 Sets



CS Jackson Comfort Covers - 5 Piece

Order Code: CSM-2602
Qty: 6 Sets



CS Wingset Comfort Covers

Order Code: CSM-2605
Qty: 5 Sets

*Compatible with rail sizes that measure 1.25" (3.2cm) wide and 1.5" (3.8 cm) tall with 14.5" (36.8 cm) space between.



CS 30mm Comfort Cushions

- + Single-use to aid infection control
- + Thicker padding provides additional patient safety & Support
- + Protection from pressure & friction related injuries

CS Comfort Cushion Set (30mm) - 5 Piece

Order Code: CSM-2635
Qty: 5 Sets



CS 60mm CS Comfort Cushions - Bariatrics

- + Provide increased support for heavier and bariatric patients
- + Single-use to aid infection control
- + Protection from pressure & friction related injuries

CS Comfort Cushion Set (60mm) - 5 Piece

Order Code: CSM-2639
Qty: 4 Sets



CS Comfort Cushion Set (30mm) - 3 Piece

Order Code: CSM-2707
Qty: 5 Sets



CS Jackson Comfort Cushion Kit A (30mm)

Order Code: CSM-2611
Qty: 5 Sets



CS Comfort Cushion Set (60mm) - 3 Piece

Order Code: CSM-2708
Qty: 4 Sets

Choose between CS Standard and Comfort covers

- + Compatible with Bow and Wilson frames
- + Absorb Moisture
- + Single use



CS Bow & Wilson Comfort Covers

Code: CSM-2608
Qty: 6 Per box

CS Bow & Wilson Standard Covers

Code: CSM-2570
Qty: 5 Per box

CS Spine Table Covers

- + Padded Chest Cushion
- + Soft and waterproof drapes
- + Single use



CS Jackson Standard Covers - 5 Piece

Code: CSM-2610
Qty: 6 Sets



CS Jackson Standard Covers - 3 Piece

Code: CSM-2604
Qty: 6 Sets



CS Pro-Axis Compatible Set

Code: CSM-4570
Qty: 6 Sets

*See Page 20 for Wilson/Bow Kit Options.



Build your own kit: Component Options

Care Surgical products can be combined to create the perfect kit for your needs. Choose from any of the options in this brochure or call our advisors to discuss customising your requirements.



CS Jackson Standard Covers



CS Comfort Cushions



CS Comfort Covers



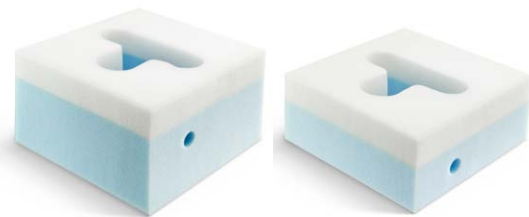
CS ProneOne



CS Prone Plus & Prone Small Face Cushions



CS Arm Supports



CS Prone Face Blocks

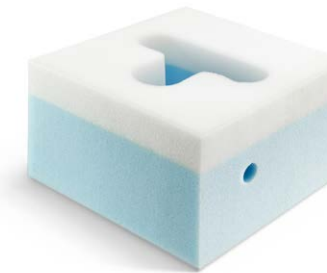


CS Bow & Wilson Standard Covers



CS Bow & Wilson Comfort Covers

Prone Face Block Options



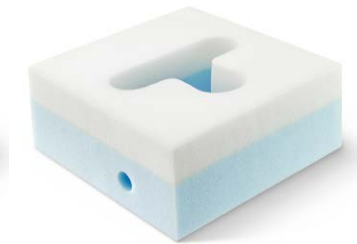
7" Right Slot



5" Right Slot



7" Left/Right Slot



5" Left/Right Slot

CS Prone Face Block 7" Right Intubation Slot (compression packed)

Order Code: CSM-2535V
Qty: 10 per box

CS Prone Face Block 7" Left & Right Intubation Slot (compression packed)

Order Code: CSM-2536V
Qty: 10 per box

CS Prone Face Block 5" Right Intubation Slot (compression packed)

Order Code: CSM-2550V
Qty: 14 per box

CS Prone Face Block 5" Left & Right Intubation Slot (compression packed)

Order Code: CSM-2551V
Qty: 14 per box

CS Prone Face Block 5" Left Intubation Slot (compression packed)

Order Code: CSM-2552V
Qty: 14 per box

Order Code	Product	Units Per Box	Page Number	Please Tick
CSM-2410	CS Disposable Lateral Head Support (Adult)	20	6	
CSM-2411	CS Disposable Supine Head Support (Adult)	20	6	
CSM-2510	CS Prone Face Cushion	10	5	
CSM-2512	CS Prone Plus Face Cushion	10	4	
CSM-2514	CS Prone Small Face Cushion	10	4	
CSM-2520	CS ProneOne Head Support	6	5	
CSM-2530	CS Prone Face Mask	5	6	
CSM-2535V	CS Prone Face Block 7"- Right Intubation Slot (compression packed)	10	21	
CSM-2536V	CS Prone Face Block 7"- Left & Right Intubation Slot, (compression packed)	10	21	
CSM-2550V	CS Prone Face Block 5" - Right Intubation Slot (Compression packed)	14	21	
CSM-2551V	CS Prone Face Block 5"- Left & Right Intubation Slot (compression packed)	14	21	
CSM-2552V	CS Prone Face Block 5"- Left Intubation Slot (compression packed)	14	21	
CSM-2560	CS Prone Head Support System	1	5	
CSM-2564	CS Prone Helmet	1	*	
CSM-2565	CS Prone Plus Head Support System	1	4	
CSM-2565-1	CS Prone Plus Helmet	1	*	
CSM-2566	CS Adjustable Mirror	1	*	
CSM-2567	CS Adjustable Mirror Plus	1	*	
CSM-2568-2	CS Pad 2"	1	*	
CSM-2569	CS Contour Head Support Cradle	1	8	
CSM-2570	CS Bow & Wilson Standard Covers	5	18	
CSM-2575	CS Arm Cushions (pair)	10	7	
CSM-2585	CS Egg Box Foam 80"x 20"	1	7	
CSM-2586	CS Egg Box Foam 12" x 20"	1	*	
CSM-2587	CS Egg Box Foam 16"x8" for Arms (pair)	12	*	
CSM-2590	CS Adjustable Prone Leg Cushions	2	7	
CSM-2600	CS Comfort Covers	6	15	
CSM-2601	CS Comfort Covers set - 3-piece	6	15	
CSM-2602	CS Jackson Comfort Covers - 5 piece	6	15	
CSM-2604	CS Jackson Standard Covers - 3 piece	6	19	
CSM-2605	CS Wingset Comfort Covers	5	15	
CSM-2608	CS Bow & Wilson Comfort Covers	6	18	
CSM-2608-6	CS Bow & Wilson Comfort Covers 30mm	6	*	
CSM-2609	CS Bow & Wilson Comfort Covers Kit A - (CSM-2535V & CSM-2575)	5	*	
CSM-2610	CS Jackson Standard Covers - 5 piece	6	19	
CSM-2611	CS Jackson Comfort Cushion Kit A (30mm) (CSM-2614 & 4x CSM-2636)	5	16	
CSM-2614	CS Jackson Comfort Chest Cushion (30mm)	5	*	
CSM-2615	CS Jackson Standard Covers Kit A - 5-piece set (CSM-2610, CSM-2535V & CSM-2575)	5	*	
CSM-2616	CS Bow & Wilson Comfort Covers Kit B (CSM-2570 & CSM-2535V & CSM-2575)	6	*	
CSM-2617	CS Jackson Standard Covers Kit B (CSM-2512 & CSM-2575 & CSM-2610)	5	*	
CSM-2618	CS Bow & Wilson Comfort Covers Kit C - with CSM-2570 & CSM-2520 & CSM-2575	5	*	
CSM-2619	CS Jackson Standard Covers Kit C - with 5-piece set with CSM-2610 & CSM-2512	6	*	

Order Code	Product	Units Per Box	Page Number	Please Tick
CSM-2623	CS Bow & Wilson Comfort Covers Kit D (CSM-2608 & CSM-2512 & CSM-2575)	5	*	
CSM-2624	CS Jackson Comfort Cushion Kit B (30mm) (CSM-2575 & CSM-2614 & 2x CSM-2636)	5	*	
CSM-2626	CS Prone Plus With Arms - CSM-2512 & CSM-2575	5	*	
CSM-2627	CS Spine Frame Kit A - with CSM-2512 & CSM-2601 & CSM-2575 (6 kits per box)	6	*	
CSM-2630	CS Bow & Wilson Standard Covers Kit E (CSM-2512 & CSM-2570 & CSM-2575)	5	*	
CSM-2635	CS Comfort Cushion Set (30mm) - 5 piece (CSM-2637 & 4 x CSM-2636)	5	16	
CSM-2638	CS Jackson Standard Covers Kit D - 5-piece set with CSM-2610 & CSM-2512 & CSM-2575	5	*	
CSM-2639	CS Comfort Cushion Set (60mm) - 5 piece (CSM-2631 & 4 x CSM-2632)	4	17	
CSM-2641	CS Bow & Wilson Standard Covers Kit F - with CSM-2570 & CSM-2512 & CSM-2575	6	*	
CSM-2642	CS Bow & Wilson Standard Covers Kit G - with CSM-2570 & CSM-2550V & CSM-2575	6	*	
CSM-2651	CS Comfort Cushion Kit A (60mm) (CSM-2639 & CSM-2575)	3	*	
CSM-2653	CS Comfort Cover Kit A (CSM-2535V & CSM-2575 & CSM-2600)	5	*	
CSM-2654	CS Comfort Cover Kit B (CSM-2600 & CSM-2550v)	6	*	
CSM-2655	CS Comfort Cover Kit C (CSM-2600 & CSM-2550 & CSM-2575)	6	*	
CSM-2670	CS Jackson Comfort Cushion Kit C (30mm) (CSM-2614 & CSM-2636x4 & CSM-2550V & CSM-2575)	4	*	
CSM-2703	CS Comfort Cover Kit E (CSM-2600 & CSM-6100)	8	*	
CSM-2704	CS Comfort Cushion 30mm Kit B (CSM-2635 & CSM-2512)	3	*	
CSM-2705	CS Bow & Wilson Comfort Covers Kit L - with CSM-2550V & CSM-2575	5	*	
CSM-2706	CS Bow & Wilson Comfort Covers Kit M - with CSM-2520 & CSM-2575	4	*	
CSM-2707	CS Comfort Cushion Set (30mm) - 3 piece	5	16	
CSM-2708	CS Comfort Cushion Set (60mm) - 3 piece	4	17	
CSM-2709	CS Chest Support	1	11	
CSM-2712	CS Spine Frame	1	11	
CSM-2712-4	CS Spine Frame Straps (set of 4)	1	11	
CSM-2714	CS Head Tray Attachment	1	9	
CSM-2715	CS Spine Frame Set - Standard (Chest, Hips, Frame, Straps & CSM-2601)	1	10	
CSM-2716	CS Prone Patient Supports - Standard (Chest Support, Hip Supports & Thigh Supports)	1	14	
CSM-2717	CS Hip Supports (pair)	1	14	
CSM-2718	CS Thigh Supports (pair)	1	14	
CSM-2719	CS Hip Supports - Large (pair)	1	14	
CSM-2805	CS Supine Head Support (Adult)	1	13	
CSM-2807	CS Heel Supports (Pair)	1	13	
CSM-2812	CS Lateral Head Support (Adult)	1	13	
CSM-2820	CS Shin Supports (pair)	1	13	
CSM-2821	CS Knee Rings (Pair)	1	13	
CSM-2902	CS Prone Chest and Pelvic Rolls	2	7	
CSM-4570	CS Pro-Axis Compatible Set	6	19	
CSM-4571	CS Pro-Axis Compatible Kit A (CSM-4570 & CSM-2535V & CSM-2575)	6	*	
CSM-4572	CS Pro-Axis Compatible Kit B (CSM-4570 & CSM-2512 & CSM-2575)	6	*	
CSM-4574	CS Pro-Axis Compatible Kit C (CSM-4570, CSM-2512 & CSM-2575)	6	*	
CSM-6100	CS C-Plus Face Cushion	10	*	
6646.01	Fisso Armboard	1	12	

*Product Available But Not Shown.

*Product Available But Not Shown.



CARE SURGICAL

Care Surgical LLC
Marlborough, MA 01752
Toll Free: 1-866 243 4107
info@care-surgical.com
www.care-surgical.com

alpinemedica  [®]

alpinemedica es: Jesús Del Pino Favila PIFJ731124UW5
Oficinas: Jaime Gómez No. 2802 Int. 2 Col. Paseos Del Sol
Zapopan, Jalisco, México. C.P. 45079
Tels: (+52) 33-15-78-28-02 / 33-15-68-16-02
www.alpinemedica.com.mx

